

# WFD Organisational Chart

July 2024

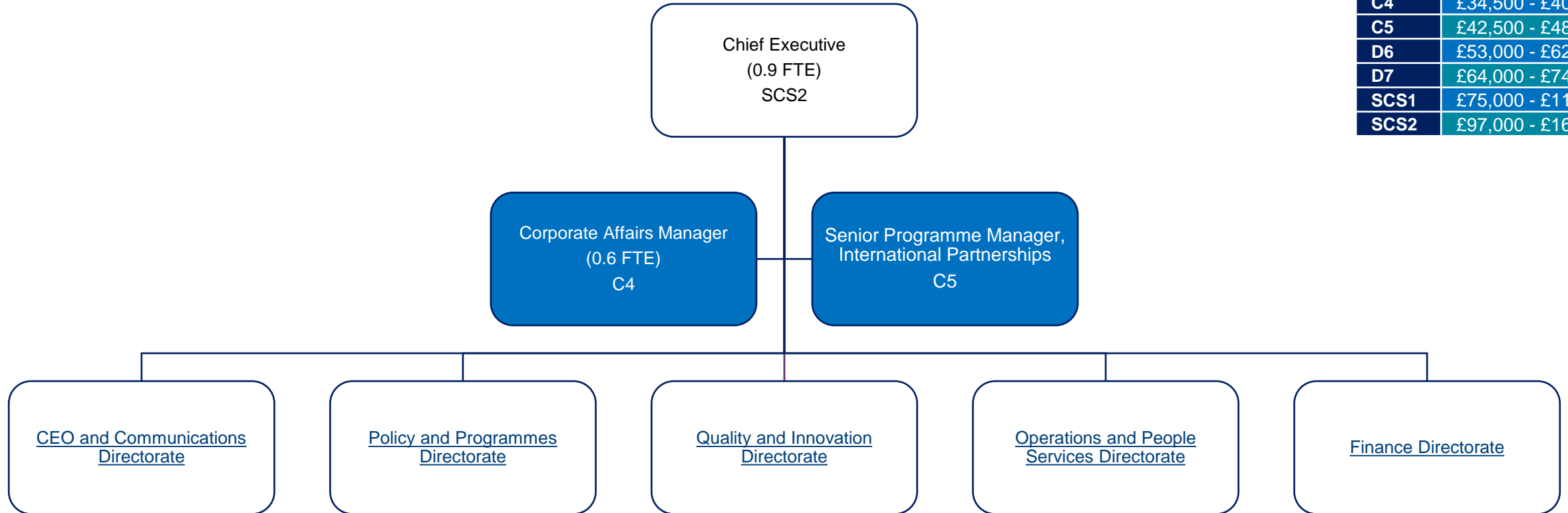
WFD People Team



# Directorates – UK Centre

KEY	
<span style="background-color: #0070C0; color: white; padding: 2px;"> </span>	Core-funded UK role
<span style="background-color: #FFA500; color: white; padding: 2px;"> </span>	Core-funded Regional capabilities
<span style="background-color: #008000; color: white; padding: 2px;"> </span>	50% > Third-party funded UK role

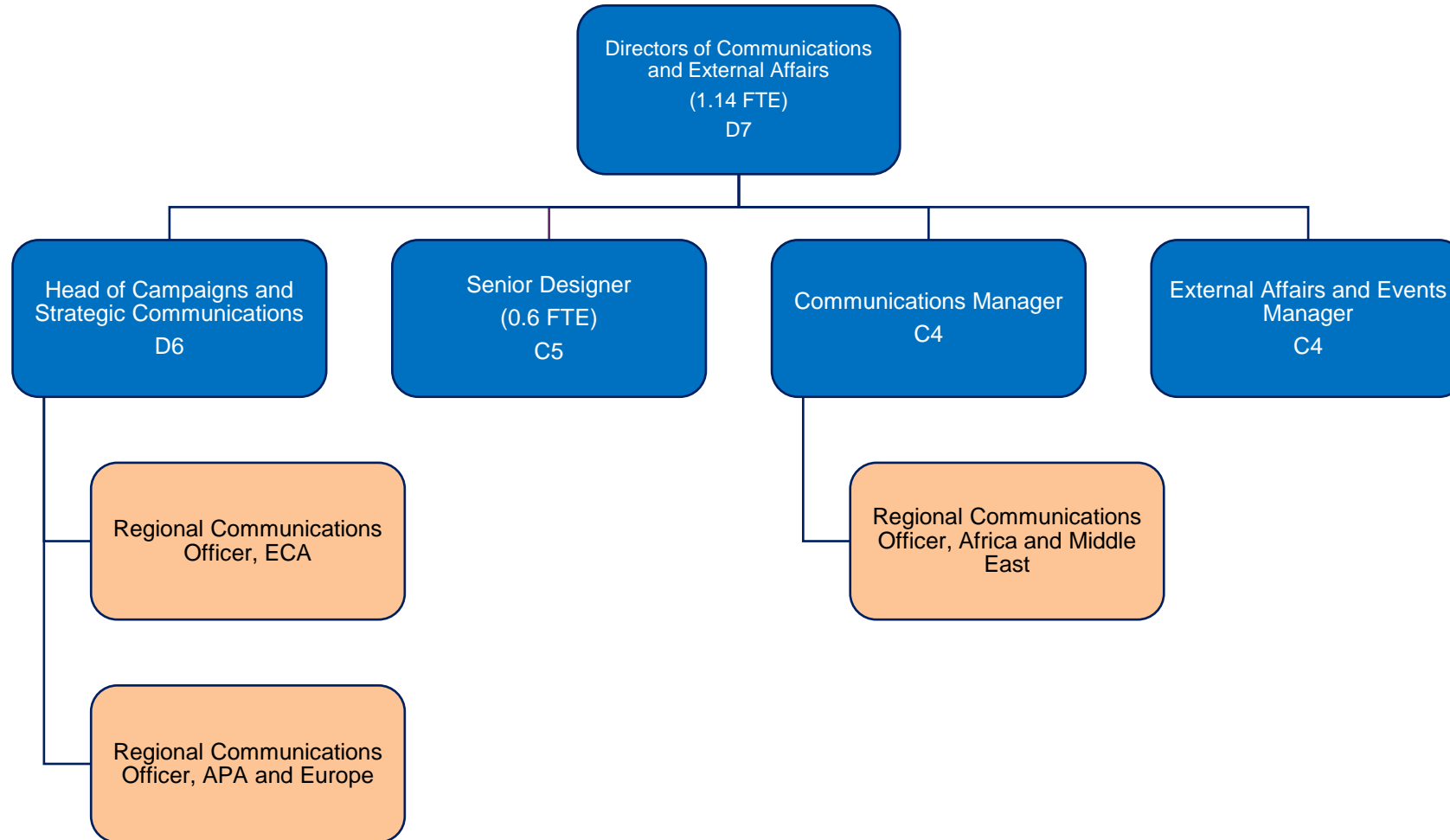
Grade	Pay band
A2	£26,500
B3	£28,000 - £30,000
C4	£34,500 - £40,000
C5	£42,500 - £48,000
D6	£53,000 - £62,000
D7	£64,000 - £74,000
SCS1	£75,000 - £117,800
SCS2	£97,000 - £162,500



# CEO and Communications Directorate

KEY	
<span style="background-color: #0070C0; color: white; padding: 2px;"> </span>	Core-funded UK role
<span style="background-color: #FFC080; color: black; padding: 2px;"> </span>	Core-funded Regional capabilities
<span style="background-color: #00B050; color: white; padding: 2px;"> </span>	50% > Third-party funded UK role

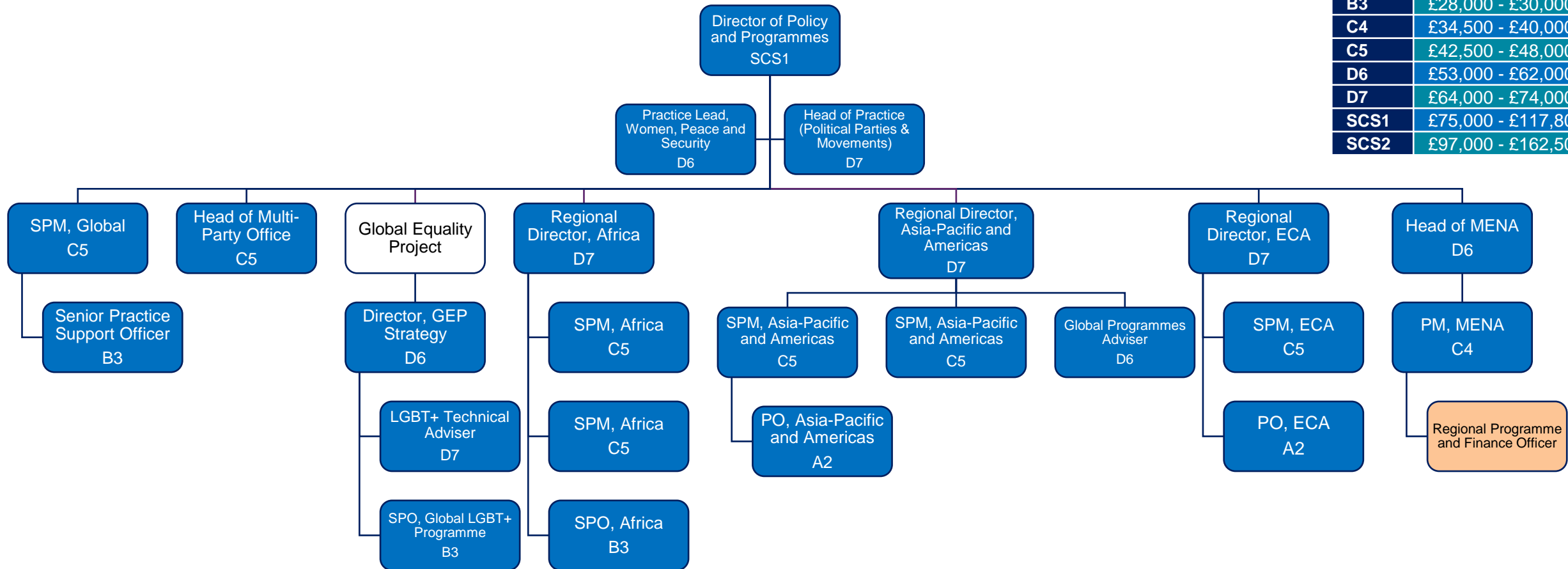
Grade	Pay band
A2	£26,500
B3	£28,000 - £30,000
C4	£34,500 - £40,000
C5	£42,500 - £48,000
D6	£53,000 - £62,000
D7	£64,000 - £74,000
SCS1	£75,000 - £117,800
SCS2	£97,000 - £162,500



# Policy and Programmes Directorate

KEY	
<span style="background-color: #0070C0; color: white; padding: 2px;"> </span>	Core-funded UK role
<span style="background-color: #FFA500; color: white; padding: 2px;"> </span>	Core-funded Regional capabilities
<span style="background-color: #008000; color: white; padding: 2px;"> </span>	50% > Third-party funded UK role

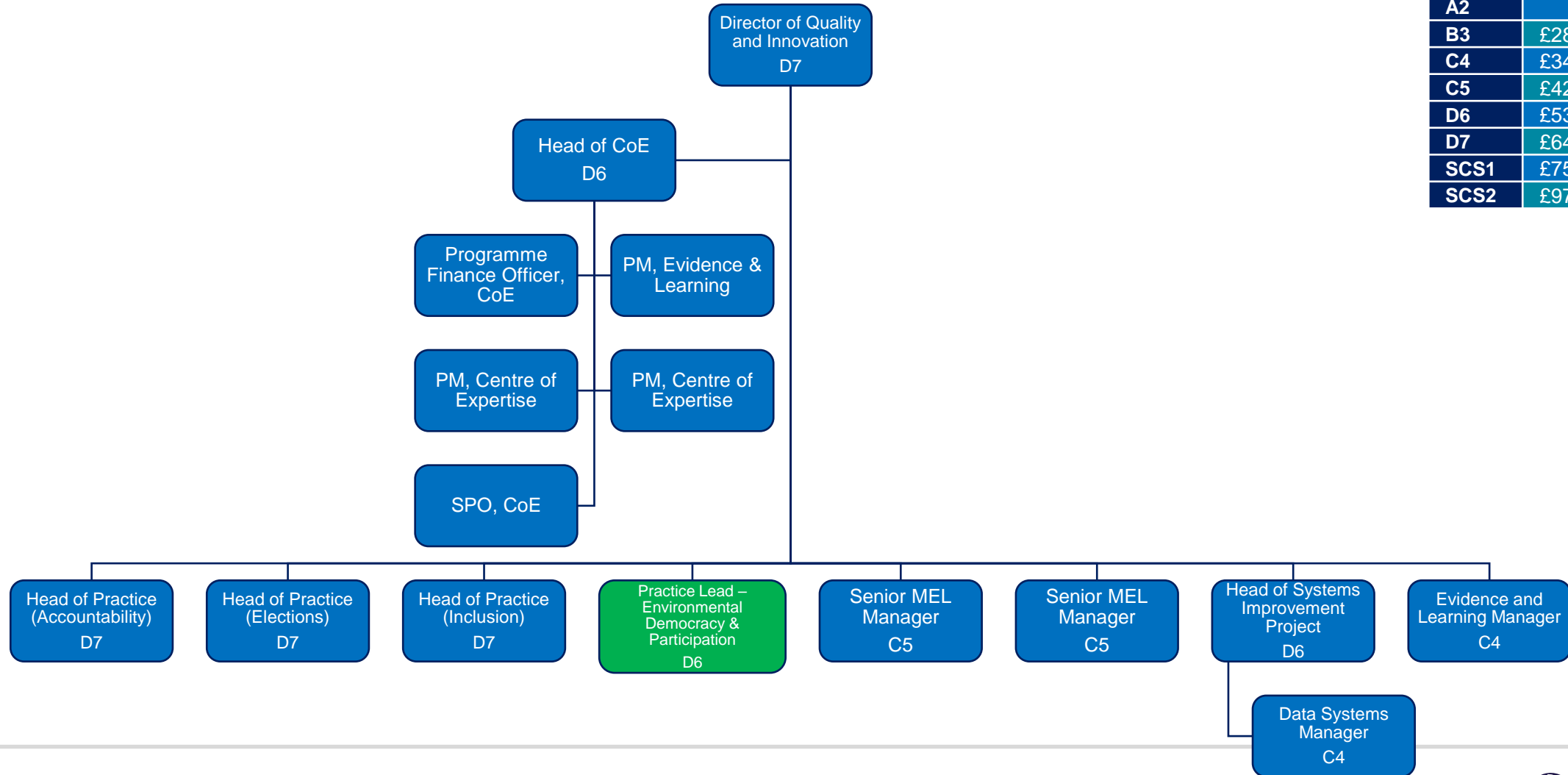
Grade	Pay band
A2	£26,500
B3	£28,000 - £30,000
C4	£34,500 - £40,000
C5	£42,500 - £48,000
D6	£53,000 - £62,000
D7	£64,000 - £74,000
SCS1	£75,000 - £117,800
SCS2	£97,000 - £162,500



# Quality and Innovation Directorate

KEY	
<span style="background-color: #0070C0; color: white; padding: 2px;"> </span>	Core-funded UK role
<span style="background-color: #FFA500; color: white; padding: 2px;"> </span>	Core-funded Regional capabilities
<span style="background-color: #00B050; color: white; padding: 2px;"> </span>	50% > Third-party funded UK role

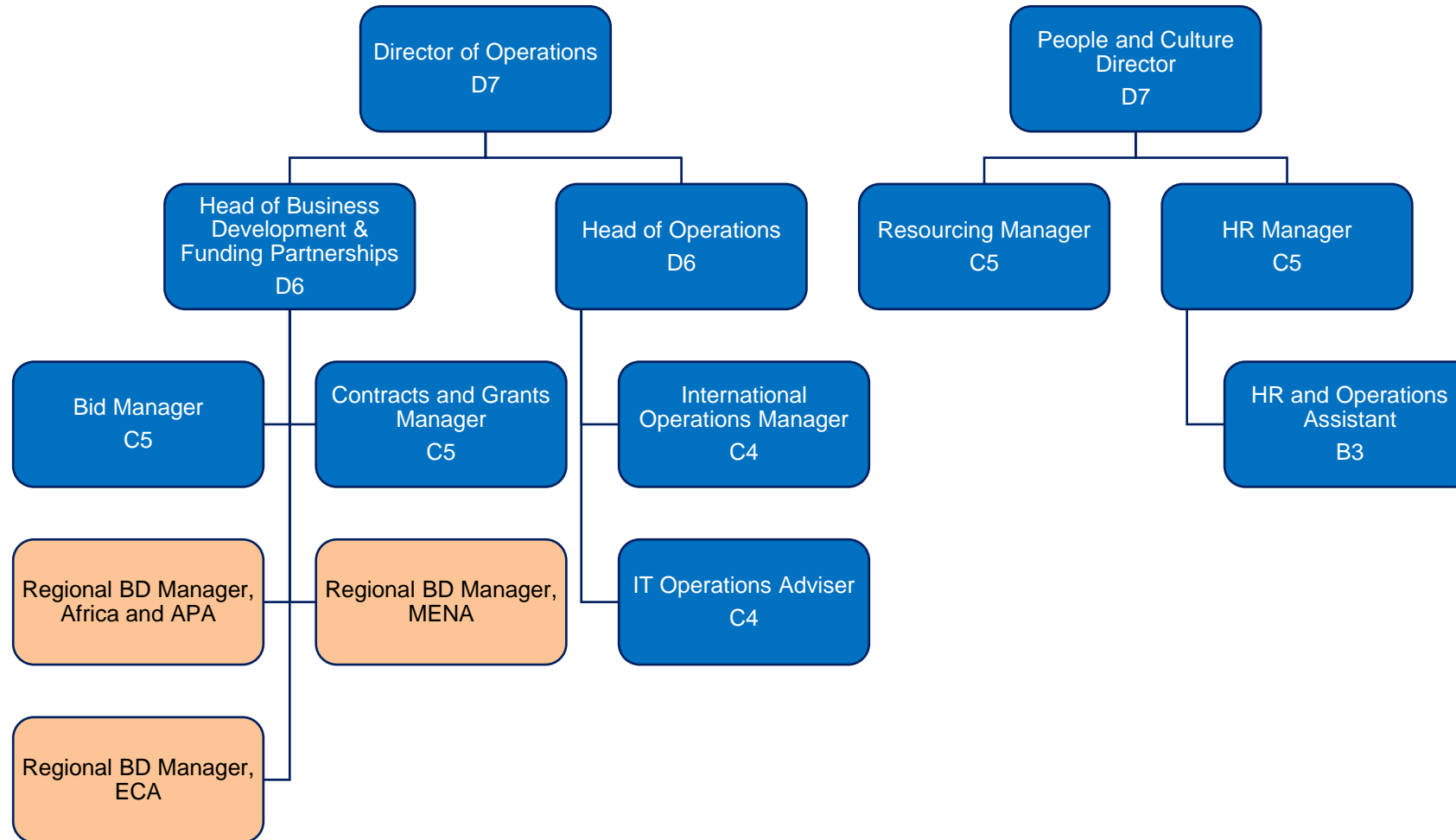
Grade	Pay band
A2	£26,500
B3	£28,000 - £30,000
C4	£34,500 - £40,000
C5	£42,500 - £48,000
D6	£53,000 - £62,000
D7	£64,000 - £74,000
SCS1	£75,000 - £117,800
SCS2	£97,000 - £162,500



# Operations and People Services Directorate

KEY	
<span style="background-color: #0070C0; color: white; padding: 2px;"> </span>	Core-funded UK role
<span style="background-color: #FFC080; color: white; padding: 2px;"> </span>	Core-funded Regional capabilities
<span style="background-color: #00B050; color: white; padding: 2px;"> </span>	50% > Third-party funded UK role

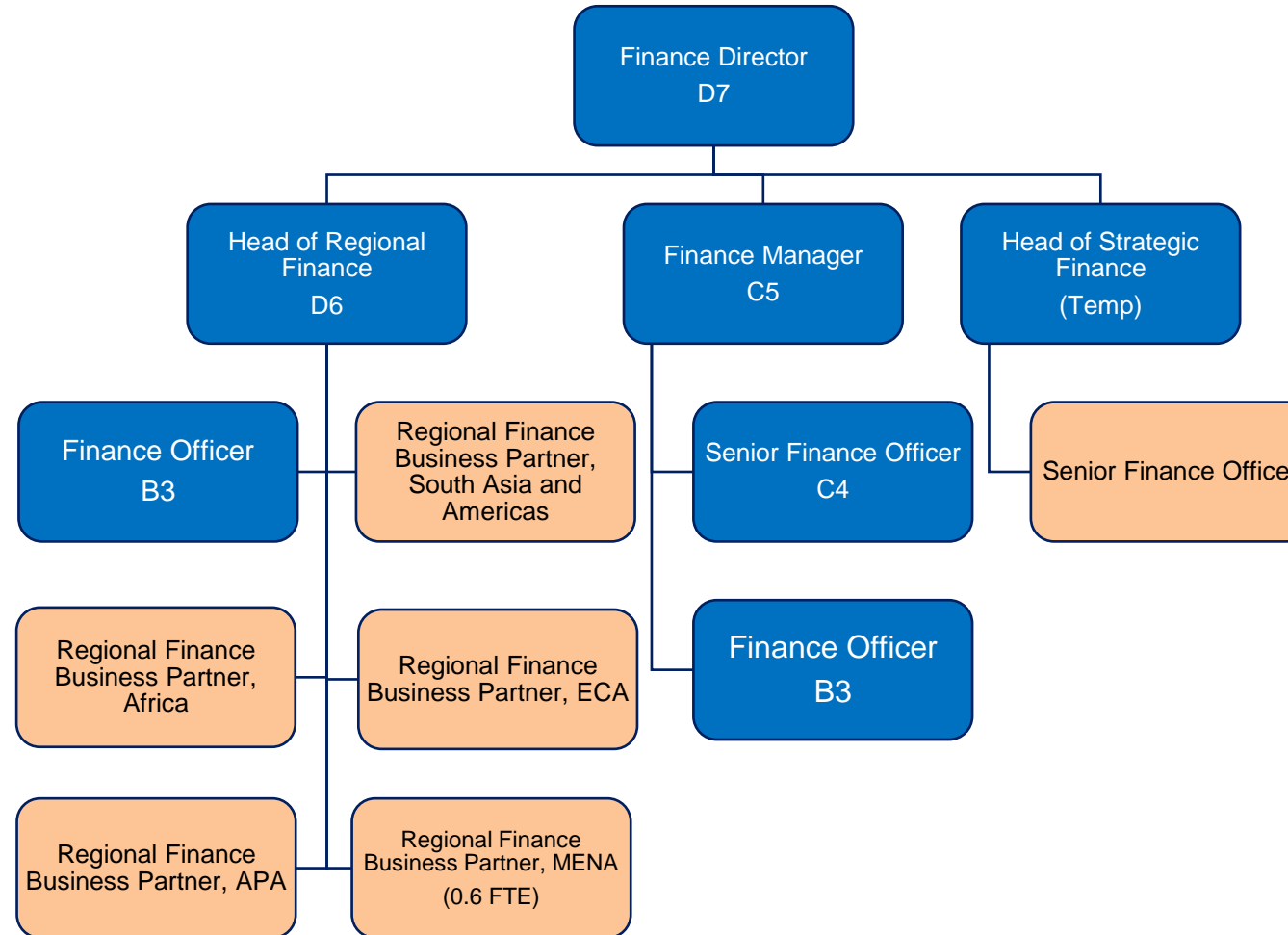
Grade	Pay band
A2	£26,500
B3	£28,000 - £30,000
C4	£34,500 - £40,000
C5	£42,500 - £48,000
D6	£53,000 - £62,000
D7	£64,000 - £74,000
SCS1	£75,000 - £117,800
SCS2	£97,000 - £162,500



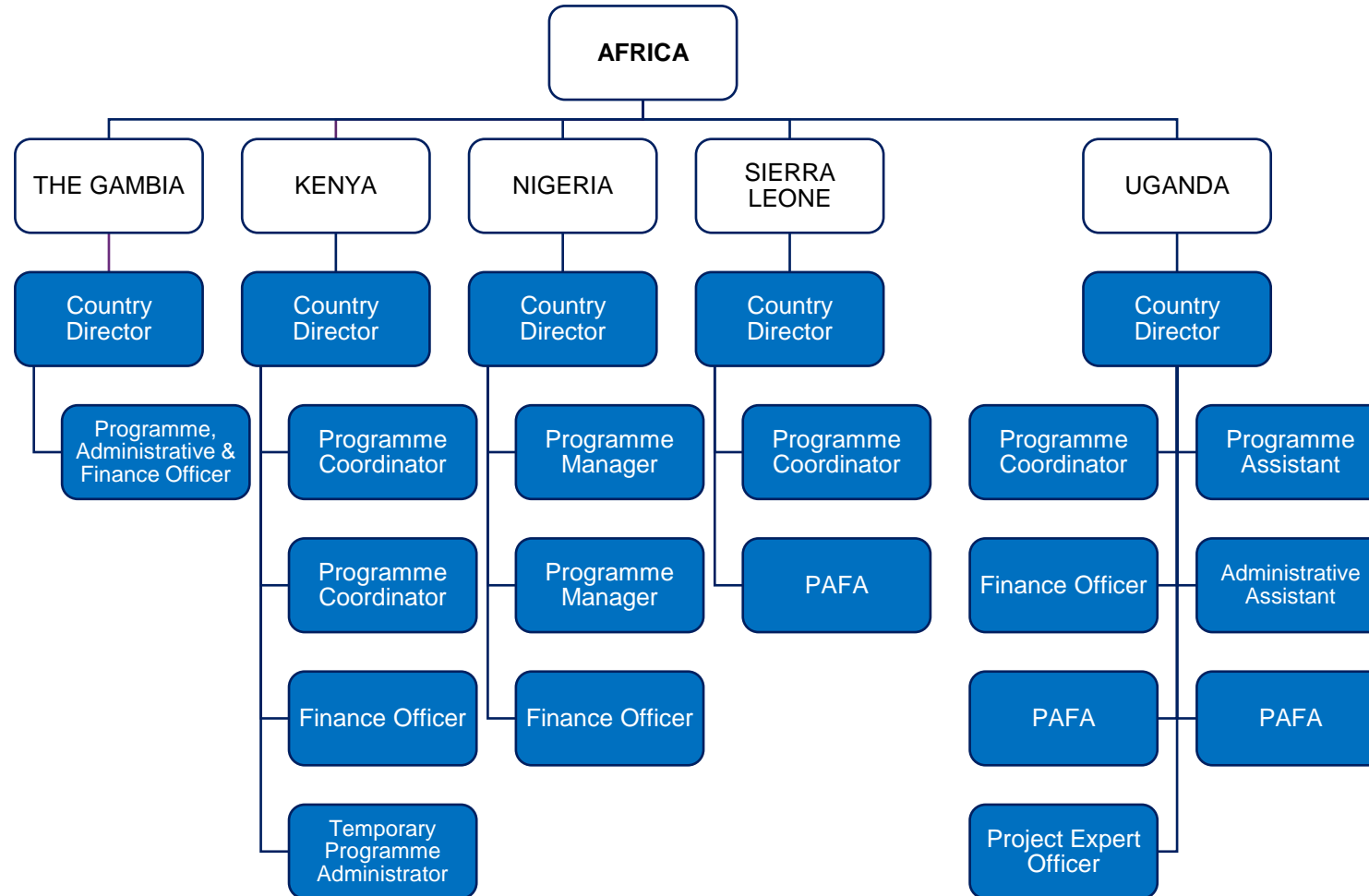
# Finance Directorate

KEY	
<span style="background-color: #0070C0; color: white; padding: 2px;"> </span>	Core-funded UK role
<span style="background-color: #FFC080; color: white; padding: 2px;"> </span>	Core-funded Regional capabilities
<span style="background-color: #00B050; color: white; padding: 2px;"> </span>	50% > Third-party funded UK role

Grade	Pay band
A2	£26,500
B3	£28,000 - £30,000
C4	£34,500 - £40,000
C5	£42,500 - £48,000
D6	£53,000 - £62,000
D7	£64,000 - £74,000
SCS1	£75,000 - £117,800
SCS2	£97,000 - £162,500

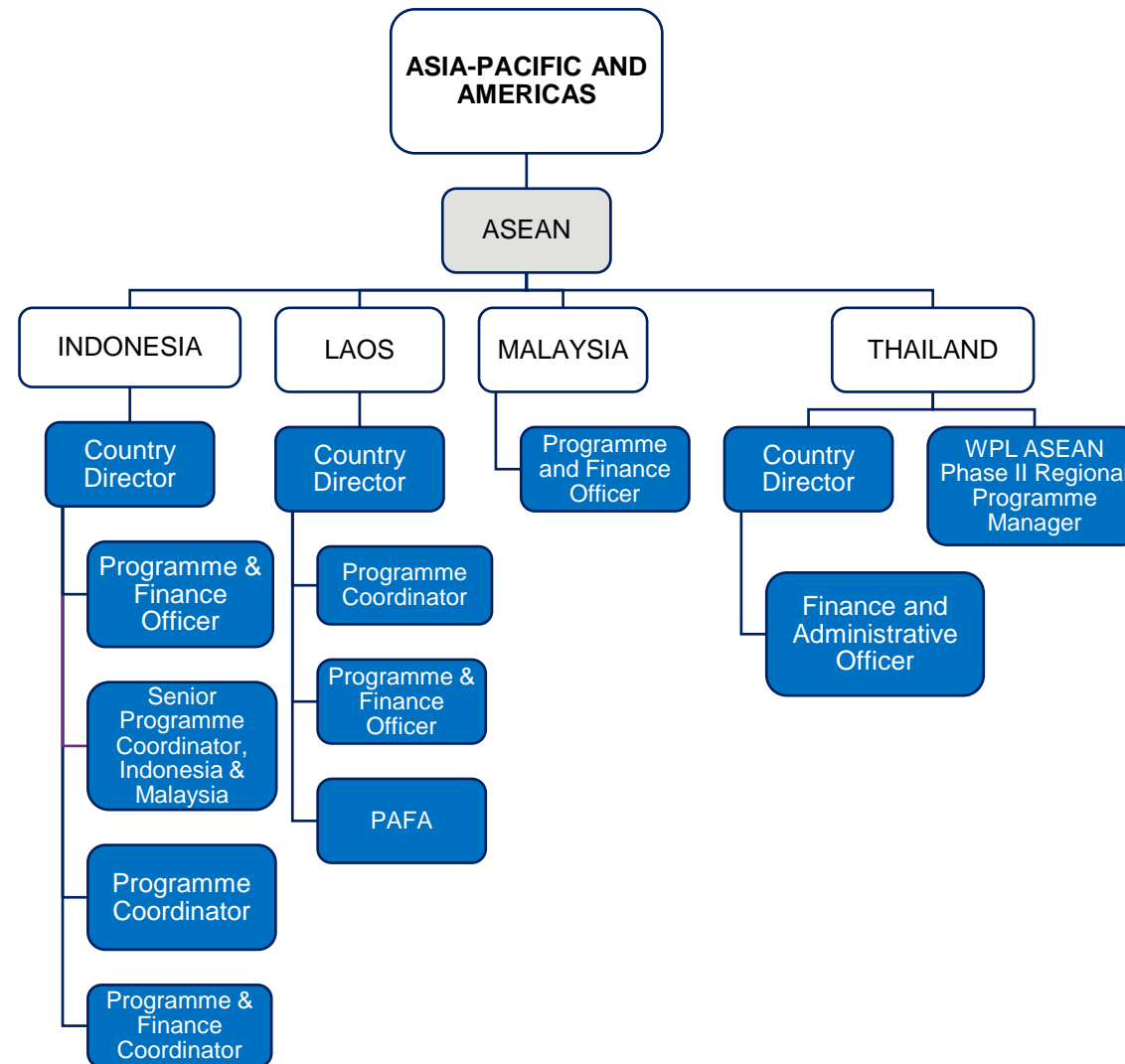


# Africa Country Office Teams

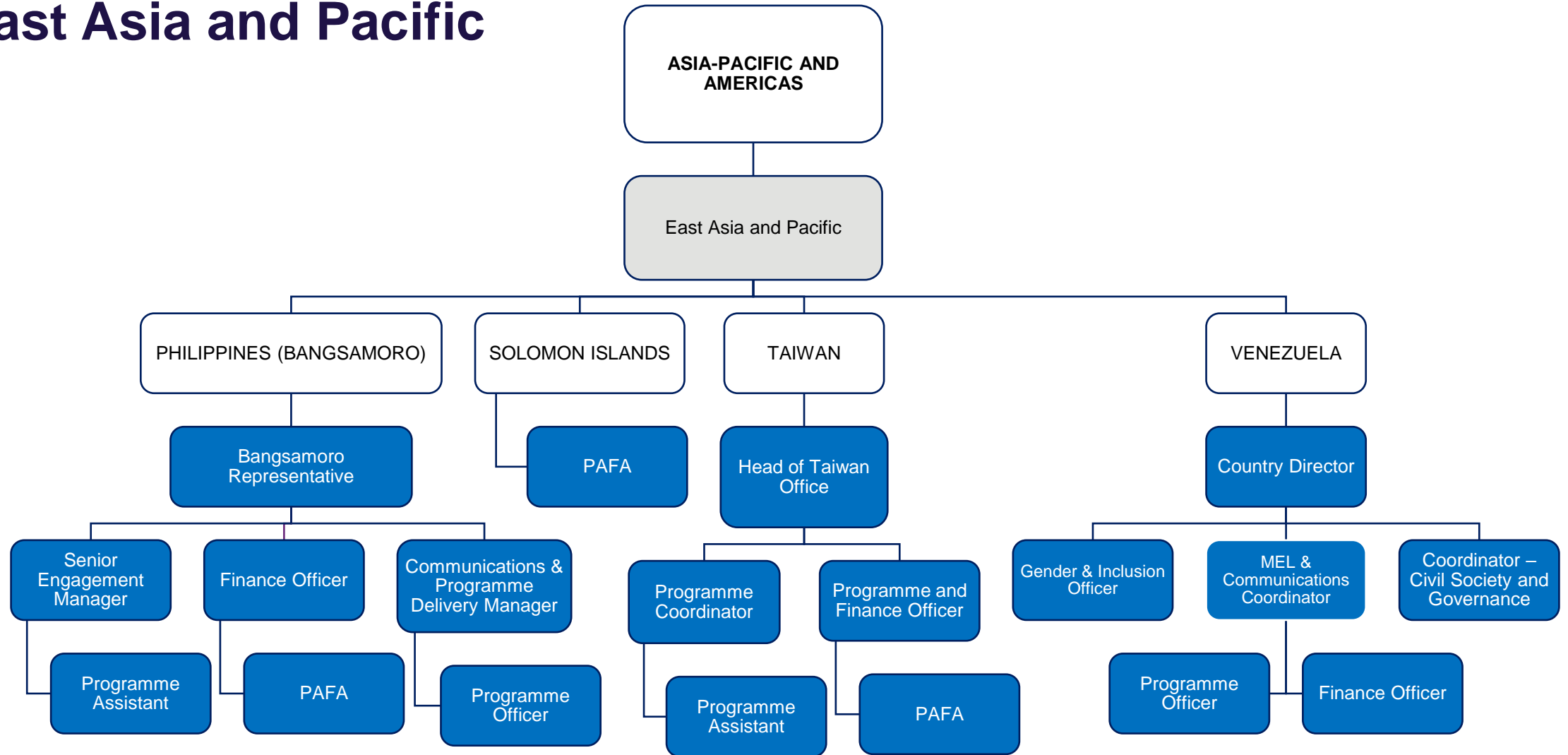




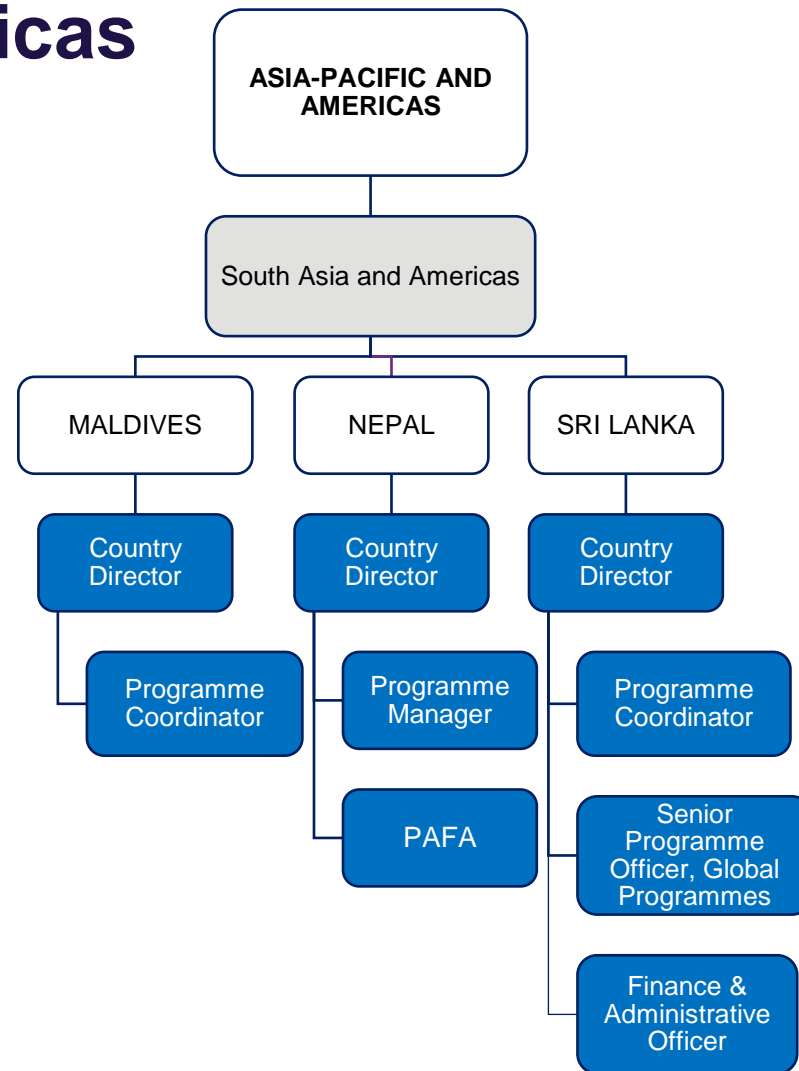
# Asia-Pacific and Americas Country Office Teams - ASEAN



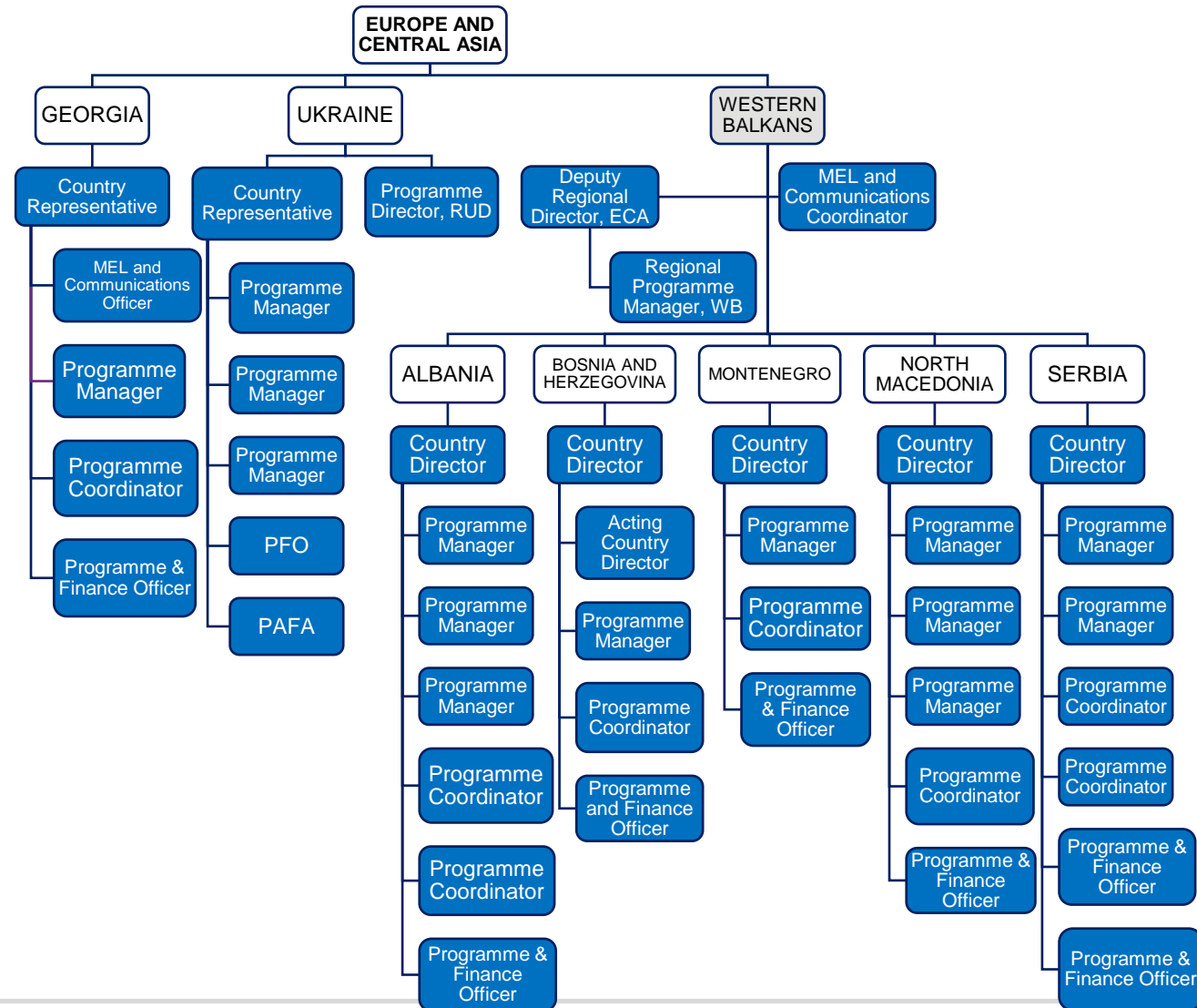
# Asia-Pacific and Americas Country Office Teams – East Asia and Pacific



# Asia-Pacific and Americas Country Office Teams – South Asia and Americas



# Europe and Central Asia Country Office Teams



# MENA Country Office Teams

